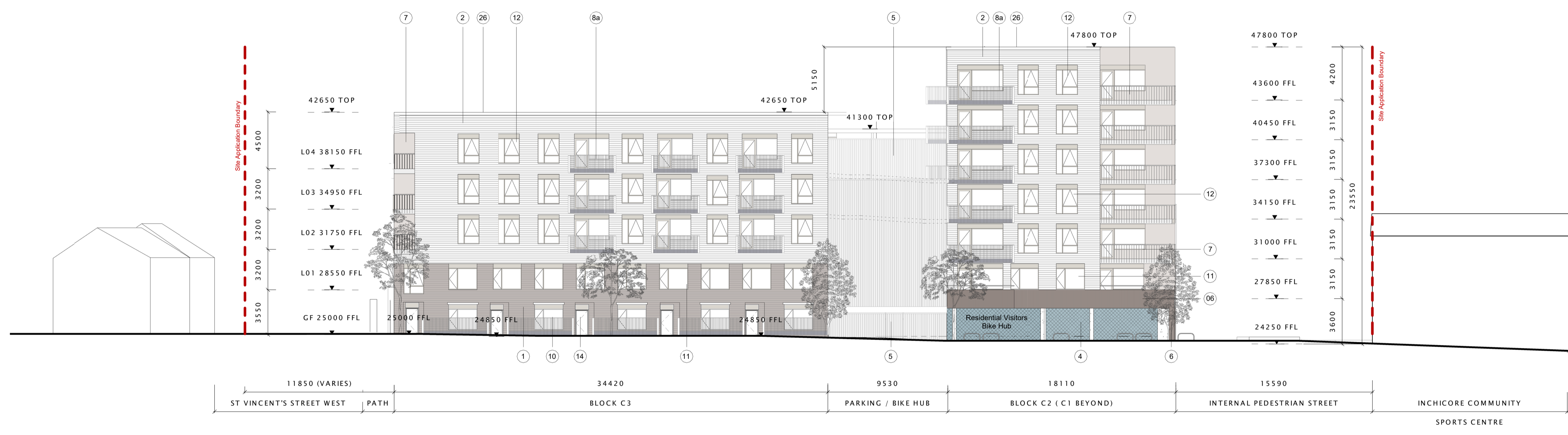
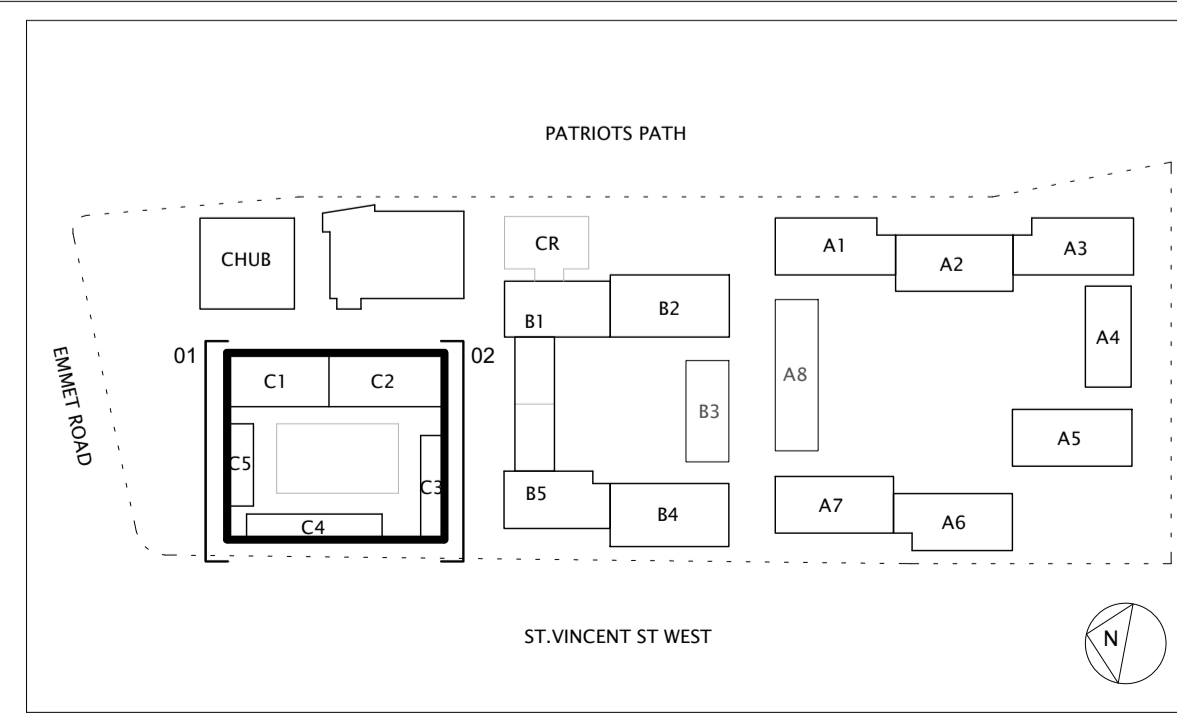


01 BLOCK C - Commercial mixed use North Elevation (to Emmet Road)  
1:200



02 BLOCK C - Commercial mixed use South Elevation (to new internal shared street)  
1:200

revision	drawn	checked	date	no.



- Facade Materials Key Notes: To be read in conjunction with the Architectural Design Statement**
- 1 Grey clay brickwork
  - 2 White clay brickwork
  - 3 Mid grey clay brickwork
  - 4 Coloured glazed terracotta tile finish or similar
  - 5 Galvanised steel or timber screen with integrated access sliding and/or swing gates as indicated.
  - 6 White precast concrete cladding panel or similar.
  - 7 Recessed balcony with flat bar galvanised metal railings, timber top rail, fascia and soffit with aluminium finish
  - 8a Projecting balcony with flat bar galvanised metal railings, fascia and soffit with aluminium finish
  - 8b Aluminium privacy screening where indicated or similar
  - 9 Gallery access structures, with flat bar galvanised metal with aluminium soffit panels, non-slip plank deck or similar
  - 10 Composite double glazed window, aluminium finish externally and timber internally, with precast concrete lintel and cill, integrated metal spandrel panel / louvre, with door where indicated.
  - 11 Composite double glazed window, aluminium finish externally, with concrete cill, integrated metal spandrel panel / louvre, with door where indicated
  - 12 Composite double glazed window, aluminium finish externally and timber internally, with metal cill, integrated metal spandrel panel / louvre, with door where indicated
  - 13 Composite double glazed window, aluminium finish externally
  - 14 Entrance window / door glazing system with precast concrete cladding panel surround or similar
  - 15 Curtain wall glazing system to staircase with door and AOV where indicated, aluminium finish
  - 16 Galvanised steel or timber screen with integrated access sliding and/or swing gates as indicated with curtain wall glazing system
  - 17 Anodised aluminium roller shutters
  - 21 Perforated aluminium profiled screening to roof plant area
  - 22 Galvanised steel framed balcony structure
  - 23 White Render finish
  - 24 White Precast Concrete Panel with entrance signage / services
  - 25 Ventilation panel
  - 26 Dark Grey precast concrete coping
  - 28 Transparent glass panels with integrated ventilation louvres
  - 30 Selected colour glass panel
  - 32 Composite double glazed curtain wall system, aluminium finish externally and timber internally
  - 34 Flat bar metal railings, with metallic coloured finish
  - 35 Perforated clay brickwork screen wall, warm grey coloured blend
  - 37 precast concrete bench
  - 39 Metal coping, Aluminium

- 25 Ventilation panel  
26 Dark Grey precast concrete coping  
28 Transparent glass panels with integrated ventilation louvres  
30 Selected colour glass panel  
32 Composite double glazed curtain wall system, aluminium finish externally and timber internally  
34 Flat bar metal railings, with metallic coloured finish  
35 Perforated clay brickwork screen wall, warm grey coloured blend  
37 precast concrete bench  
39 Metal coping, Aluminium
- (\*Refer to roof plan for roof typologies)

**NOTES:**  
No dimensions on this drawing are to be scaled.  
All levels and dimensions on this drawing are to be checked on site. Any discrepancies on this drawing are to be reported to and verified with the architect.  
This drawing is to be read in conjunction with all other application documentation and information as issued.  
This is not a construction drawing, it is unsuitable for the purpose of construction and must on no account be used as such.  
(\* Placeholder names are used for ease of reference in the Application Documents  
This drawing is the copyright of Bucholz McEvoy Architects Ltd and may not be copied, altered, or reproduced in any form or passed to a third party without license or written consent.

<b>PLANNING</b>			
<b>COMMERCIAL MIXED USE - ELEVATIONS (OUTER)</b>			
drawing no.	scale	drawn	project no.
0318-C-A4-01	1:200@A1	MA/SJ	0318
date	checked	revision	
SEPT 2022	MB		
project <b>EMMET ROAD MIXED-USE DEVELOPMENT, DUBLIN 8</b>			
client <b>DUBLIN CITY COUNCIL</b>			
<b>bucholzmcEvoyARCHITECTS</b>			
UNIT C	MOUNTPLEASANT BUSINESS CENTRE	UPPER MOUNTPLEASANT AVENUE	DUBLIN 6 IRELAND
T +353 1 496 6340	F +353 1 496 6341	INFO@BMCEA.COM	WWW.BMCEA.COM